



**KLIC 2024**

# **KLIC2024 HIGHLIGHTS RECAP**

**Leveraging Immunization  
Innovation to Modernize  
Primary Health Care**

19TH - 21ST NOVEMBER 2024 | COTONOU, BENIN

## 01 WHY KLIC2024

As an initiative of GaneshAID, the Innovation Lab event KLIC2024 was designed to assist low- and middle-income countries (LMICs) in accessing knowledge on cutting-edge innovations in public health. To date, very few countries have the capacity to decide, direct, monitor, and scale up innovations and new approaches that address their specific challenges. This is largely due to a lack of knowledge about proven innovations and practical experiences. Consequently, targeted and differentiated pro-equity interventions based on country contexts remain insufficient. Additionally, few innovations are led and managed by governments to modernize national health systems and make them resilient enough to achieve the Millennium Health Goals and Universal Health Coverage.

## 02 KLIC2024: THE FIRST COUNTRY-LED INNOVATION LAB

To prepare for the organization of KLIC2024, GaneshAID assembled both the Organization Committee and the Technical Committee. The KLIC2024 Technical Committee is primarily composed of immunization program managers, along with experts and professionals in primary health care, from 10 LMICs in Africa and Asia. As a result, the obstacles identified and solutions discussed during the Innovation Lab event were largely determined by the delegates from these countries. Additionally, GaneshAID acted as the Committee's technical secretariat to facilitate discussions and inputs among Technical Committee Members, ensuring the event's alignment with their decisions.

## 03 OBJECTIVES OF KLIC2024

### GENERAL OBJECTIVES



Structuring countries' knowledge and learning on innovations from vaccination in the Primary Health Care platform.

### SPECIFIC OBJECTIVES



Document innovative strategies to mitigate vaccine misinformation.



Map pioneering solutions to reach under-served populations in rural, conflict, peri-urban, and special populations areas.



Share revolutionary approaches to fighting epidemics and supporting humanitarian aid.



Improve the innovation ecosystem at the country level.

## 95 participants

74

On-site

21

Online

61

Africa

26

Asia

8

Other continents



## 04 METHODOLOGY

KLIC2024 is an original event that immerse participants in an ocean of knowledge on public health innovations. Through a variety of activities, participants quickly grasp the essence of technological innovations, tools, approaches and strategies to overcome recurring obstacles to immunization and health equity and coverage. The Innovation Lab features knowledge-building techniques for pro-equity health innovations, interspersed with creative and brainstorming sessions, allowing participants to explore and develop targeted solutions to their real-life challenges.

24

**KLIC talks** aimed at raising awareness of simple and transformative innovations (10 minutes) adaptable to the needs and specifics of each country.



14

**Mini-trainings** on innovative approaches and tools to optimize health programs, processes, and people (health personnel and the community).



9

**Storytellings** or narratives, with the goal of sharing successful innovation experiences and inspiring participants to take action.



3

**Hackathon sessions** to prototype new ideas to overcome recurring obstacles in health and vaccination programs of participating countries. Funding is mobilized to allow willing participants to test the prototypes in their respective countries.



7

**Demonstrations of available** cost-effective digital and technological innovations that are underused or insufficiently deployed.



The architecture of the KLIC 2024 Innovation Lab has enabled progress in learning and sharing of experience on innovations by innovation users, innovators, innovation leaders and financial contributors.



## 05 KNOWLEDGE AND LEARNING SYNTHESIS

Innovation plays a central role in the transformation and adaptation of health systems around the world. Faced with complex challenges such as armed conflicts, the emergence of new diseases, and health crises such as the COVID-19 pandemic, it is imperative to rethink traditional approaches to health care. Innovation is proving to be a strategic lever for modernizing infrastructure, optimizing resources, and strengthening the resilience of health systems. In this context, participants discussed various technological, organizational, and resilience-building innovations, as well as the challenges associated with developing, implementing, and scaling up these innovations.





## KNOWLEDGE CAPSULE 1

### HOW COUNTRIES OVERCOME PUBLIC HEALTH CHALLENGES WITH INNOVATION ?

As innovation is no longer an option for low- and middle-income countries, several countries have already introduced breakthrough innovations and are actively sharing their knowledge on the transformative power of innovation to address ongoing public health challenges in different settings. Through concrete examples and success stories from country representatives, participants explored how innovative solutions can modernize immunization and primary health care systems. Our discussion centered on

novel approaches to overcoming barriers to health equity and coverage and engaging different actors, including such as local communities, NGOs, humanitarian agencies, private-sector partners, and other sectors, to reach underserved populations. Through these stories and demonstrations, KLIC inspired and equipped participants with practical knowledge to drive health innovation within their own contexts.

## KNOWLEDGE CAPSULE 2

### WHAT DOES IT TAKE FOR COUNTRIES TO LEAD INNOVATION?

The need to develop more innovative leaders emerged alongside the necessity to establish clear visions for innovation within countries. This includes the crucial role of policies, leadership, and strategic planning in fostering an environment conducive to innovation. As participants emphasized the importance of combining vision, leadership, and practical capacity, national and subnational innovation leaders shared their experiences on the strategies and best practices that enabled their success. Discussions focused on the essential elements required to lead a national innovation strategy, such as creating innovation ecosystems with supportive regulatory frameworks, fostering public-private partnerships,

strengthening the capacities of populations, and co-creating innovative tools to assist countries in accessing, adopting, and scaling up innovations. The establishment of the innovation center in Chad, aimed at modernizing the health system, exemplifies the country's visionary innovation strategy. To practice developing innovation, participants were requested to apply the principles and approaches of prototyping breakthrough new ideas to overcome persistent barriers to health equity. They took on the role of an innovative leader who must be visionary, pragmatic, and capable of inspiring others to push boundaries.

## KNOWLEDGE CAPSULE 3

### INNOVATIVE APPROACHES TO HUMAN RESOURCES FOR HEALTH

Despite their essential role in health care systems, human resources for health (HRH) can hinder health equity. Participants shared their innovative approaches to managing and developing the capacity of the health workforce. They had the opportunity to learn and discuss solutions for an equitable distribution of professionals, especially in underserved areas, continuous training, gamification for better team competence and motivation,

team performance management through performance coaching, and agile strategies to overcome HRH challenges. Examples from various countries illustrated novel and innovative ideas to strengthen the performance of health workforce. Importantly, discussions emphasized the need to build leadership capacities to drive systematic changes that ensure health equity and coverage.

## KNOWLEDGE CAPSULE 4

### NEW APPROACHES TO ENGAGE COMMUNITIES

Community engagement is an indispensable effort in any health program to ensure better accessibility, acceptability, and quality of healthcare services. Under this topic, participants shared their experiences in implementing approaches that involve communities in healthcare service delivery. These approaches are grounded on mutual commitment, with respect for local contexts and cultures, and consideration of the strategic use of modern innovations to strengthen community participation. Not only do they improve health outcomes, but they also make health systems more resilient and inclusive. Representatives from Laos EPI discussed their experiences in co-creating health services by actively involving communities in the design,

implementation, and evaluation of health programs. Representatives from Mali EPI highlighted the importance of community platforms in managing and monitoring the accountability of health programs, the pivotal role of women leaders in convincing families to vaccinate their children, and strategies for conducting vaccination activities in conflict zones and urban areas. These experiences demonstrated promising approaches to mobilizing the various actors across different sectors in LMICs, such as education, agriculture, the private sector, and humanitarian agencies, to support health efforts.

## KNOWLEDGE CAPSULE 5

### NEW PARTNERSHIPS

New public health partnerships in LMICs play a critical role in strengthening health systems and improving health outcomes. These innovative partnerships help mobilize resources, accelerate innovation, and build local capacity while supporting sustainable and equitable health

initiatives. Participants learned about successful partnerships between government, NGOs, private sector companies, international organizations, and non-conventional actors in conflict-affected settings. Discussions provided participants with valuable insights





into building trust, aligning goals, and mobilizing resources. By exploring various examples of effective collaboration, participants gained a deeper understanding of how to form

and sustain partnerships that drive global health innovation and improve public health outcomes.

KNOWLEDGE CAPSULE 6

INNOVATIVE PUBLIC HEALTH SUPPLY CHAINS

Innovative supply chains in countries across Africa and Asia are a major lever to improve the efficiency, availability, and resilience of health systems while reducing costs and increasing accessibility to health services. They play a key role in managing essential health products and vaccines, particularly in fragile contexts, and help overcome the unique logistical and financial challenges of LMICs. In times of crisis, these supply chains are indispensable for ensuring

timely delivery and maintaining health services. Participants explored innovative approaches, highlighting strategies to improve efficiency, reduce costs, and ensure timely delivery of health products. They also discussed with innovators the use of technology in supply chain management, the importance of data-driven decision-making, and the role of partnerships in strengthening health supply chains.

KNOWLEDGE CAPSULE 7

DIGITAL TRANSFORMATION AND AI

From the distinction between digitalization and digital transformation, participants gained valuable insights into the major opportunities of digital and AI technologies to improve primary health care in LMICs. These technologies can help overcome some of the most persistent challenges, such as the lack of competent and professionalized health workers, limited access to health infrastructure, and health inequity. Examples shared included:

- Digitalization of medical records
- Remote care through telemedicine
- Integration of AI for prevention and diagnosis
- Digital platforms for patient monitoring
- Predictive analysis and epidemic management

- Mobile applications for community education and health worker training
  - Digitalized supportive supervision
  - Electronic Logistics Management Information Systems (e-LMIS)
  - Drones for health products delivery
  - Decision-making tool for public health innovations and strategies for maintaining digital innovations.
- These examples illustrated how digital and AI technologies can be leveraged to address critical health challenges and enhance the efficiency and effectiveness of primary health care systems in LMICs.

KNOWLEDGE CAPSULE 8

EVIDENCE AND INFORMED DECISION MAKING

Evidence-based decision-making ensures health policies are grounded in reliable data, leading to more effective and sustainable outcomes. Several innovative approaches and tools discussed to improve informed decision-making in public health include:

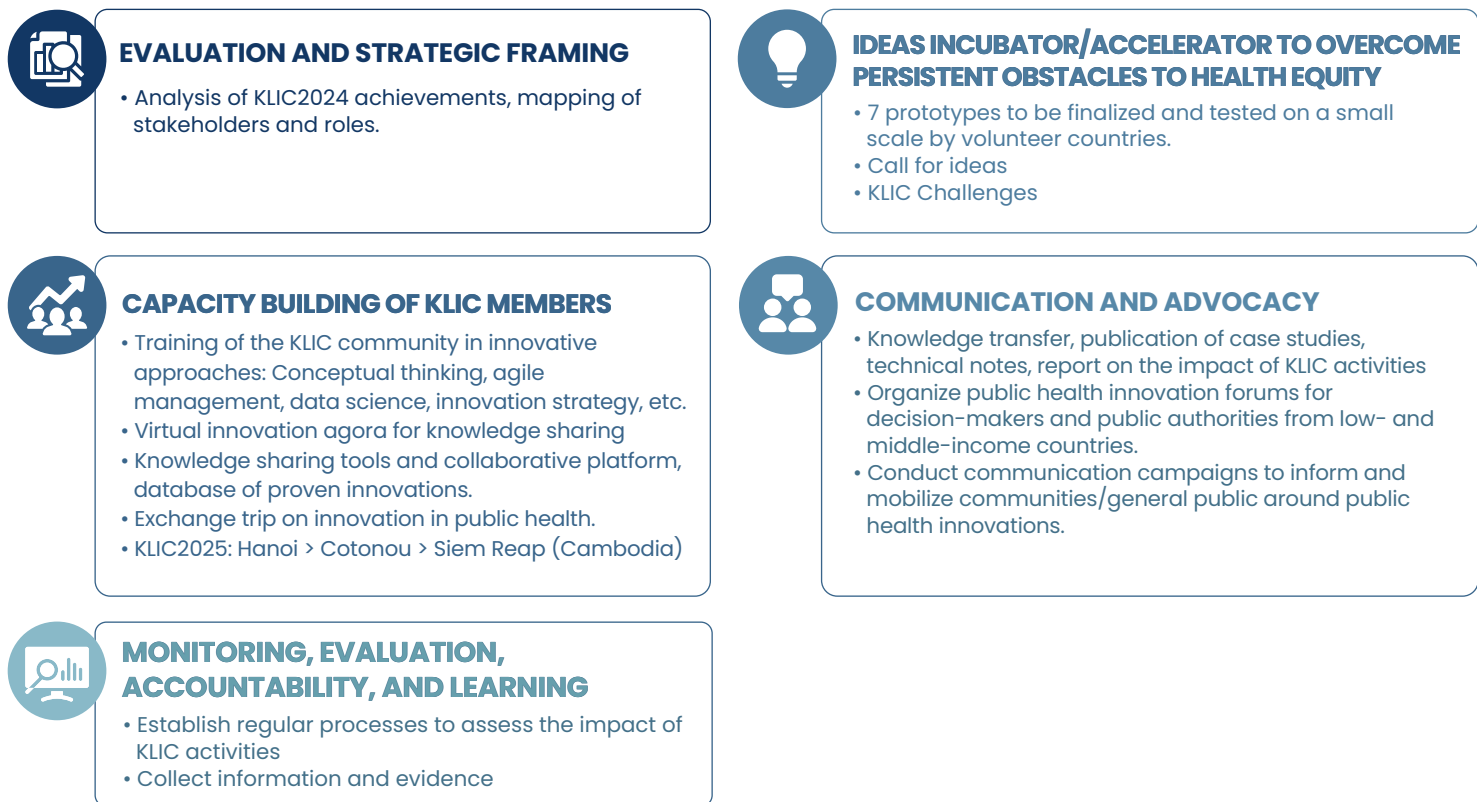
- Big data analytics for predicting public health trends, disease spikes, epidemics, or the impact of health policies and strategies
- Risk modeling for identifying population-level factors and guiding prevention/vaccination strategies
- Interactive dashboards and data visualization

- Innovative data management by intersectional collaboration for holistic and effective approaches.
- A key to public health innovation is the integration of advanced technologies, the development of new data analysis methodologies, and greater collaboration between different actors in society. Innovations to boost public health outcomes, increase health system responsiveness, and ensure its inclusivity were also discussed by participants.

06

OUR NEXT STEPS





**07 CONCLUSION**

KLIC2024 established itself as a major event, highlighting the crucial role of innovation, collaboration and data in addressing public health challenges. This edition fostered constructive discussions around innovative approaches to strengthen health systems, with a particular focus on vaccination and equity in access to health care. Participants reaffirmed their commitment to modernize and innovate in order to meet human needs and health equity issues, particularly for vulnerable populations in low- and middle-income countries (LMICs). In summary, KLIC2024 strengthened countries' knowledge of innovation and increased participants' willingness to transform traditional, ineffective practices and strategies into new solutions to definitively remove recurring barriers to equity and universal health coverage.

PROTOTYPING NEW IDEAS TO OVERCOME BARRIERS TO HEALTH EQUITY							
OBSTACLE	A	B	C	D	E	F	G
	Service delivery - Lack of targeted interventions to reach vulnerable and missed communities	Service delivery - Limited access to vaccination services	Demand generation	Program Management - Weak Governance, Leadership, Management and Coordination	Service delivery - low demand for vaccination provision	Data for action - Weak use of community data and information	Data for action - difficulty in making informed decisions
PROBLEME	Insufficient development of micro-plans-Equity/ All Actors	Discontinuity of the vaccination service	Low community engagement and demand generation	Insufficient leadership and management of professional managers	Low use of vaccination services  Low involvement of fathers in PHC vaccination	Problem of feedback of information from the community level to the central EPI.	Poor quality of data in the health information system
INNOVATIVE IDEA PROTOTYPED TO BE TESTED	Platform for monitoring of planned activities	Implementation of a digital platform allowing: - Capacity building - Monitoring of vaccine / input stock - Reminder of mothers by appointment - Mapping of EZD in coll./ RC-ASC	Community support advocacy (for vaccination) for health	Institutionalization of Leadership, Management and Governance capacity strengthening	Fathers' education and engagement platform for vaccination and PHC	Offline platform for collecting data from the community level and integration into existing platforms	Multimodal data collection application to support: - AI analysis - Decision making - Tailor-made training modules for AI capacity building.